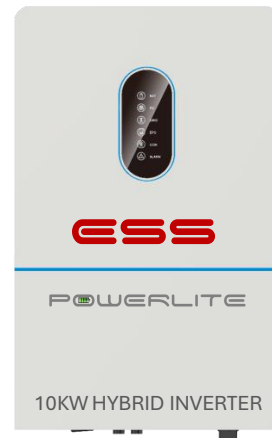


POWERLITE

SPS 10 - 20

SCALABLE POWER SYSTEM

- 10KW – 120V/240V/208V HYBRID INVERTER
- 15KW PV INPUT VIA 3 MPPTs (MAX)
- SUPPORTS AC COUPLED PV INPUT
- 210A CHARGE / DISCHARGE (MAX)
- 98% ROUND TRIP EFFICIENCY
- HIGH MPPT CURRENT
- ADVANCED PARALLEL FUNCTION
- ANTI-ISLANDING PROTECTION (BUILT-IN ATS)
- SEAMLESS BACKUP TRANSITION (<10ms)
- AC, DC, SURGE, AFCI & RSD PROTECTION
- STANDBY GENERATOR CONNECTION
- REMOTE MONITORING (OTA UPDATES)
- WALL MOUNT (INDOOR / OUTDOOR - IP65)
- ASSEMBLED IN TAIWAN

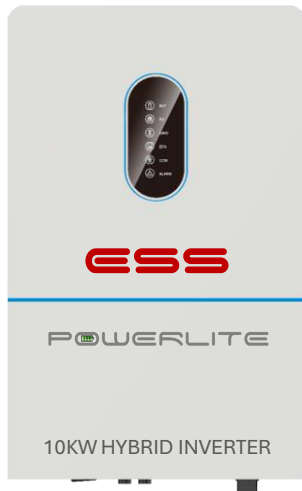
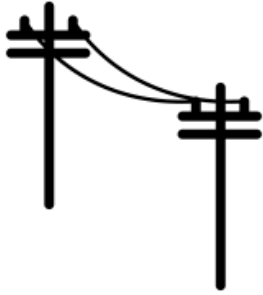


- 10.25KWH BATTERY – CATL LFP CELLS
- 8000 CYCLES – 30-YEAR LIFE
- EASY INSTALLATION - PLUG-N-PLAY OPERATION
- UP TO 16 UNITS IN PARALLEL
- EXTREME TEMPERATURE OPERATIONS
- BUILT-IN HEATER FOR LOW TEMPERATURE
 - CHARGE: -5°C ~ 55°C
 - DISCHARGE: -15°C ~ 55°C
- CLEAN, CONSISTENT & SAFE POWER
- RELIABLE, RESILIENT & REDUNDANT
- REMOTE MONITORING (OTA UPDATES)
- FLOOR/WALL MOUNT (INDOOR/OUTDOOR)



ENERGY STORAGE SYSTEMS LLC

INTEGRATE WITH GRID - SOLAR - GENERATOR



- 20.5KWH LFP BATTERY BANK
- 10KW HYBRID INVERTER

❑ RESIDENTIAL APPLICATIONS

- HOMES
- APARTMENT
- CONDOMINIUM

❑ COMMERCIAL APPLICATIONS

- OFFICE, RETAIL



- FANS & LIGHTS
- TV, CABLE MODEM, STEREO
- COMPUTER & INTERNET MODEM
- SMALL APPLIANCES
- REFRIGERATOR / FREEZER
- HVAC UNIT
- GARAGE DOOR OPENER
- PUMPS, ALARMS & SENSORS
- MEDICAL EQUIPMENT
- POWER TOOLS
- RETAIL POINT-OF-SALE SYSTEMS

20.5KWH (2x10.25) BATTERY
[MAX 16 UNITS IN PARALLEL]

BATTERY SPECIFICATIONS

Working Voltage Range	44.8 - 58.4 V	
Rated Energy	10.24 kWh	
Max. Parallel Quantity	Max. 16 Units In Parallel-165 kWh	
Rated Charging Current	0.6C , 120 A	
Max. Charging Continuous Current	0.6C , 120 A	
Rated Discharge Current	0.6C , 120 A	
Max. Discharge Continuous Current	0.6C , 120 A	
Battery Max. Charge/Discharge Power	6.14 kW/6.14 kW	
Peak Discharge Current /Power	160 A / 8.19 kW, 1 min	
Standard Charging Method	0.5C CC to 57.6 V; CV at 57.6 V Till Current Is 0.05C	
Available SOC Range	0% ~ 100%	Recommend 90% DOD
SOC Transportation Range	50%	
Dimensions [W * D * H]	Width : 21.65 in Depth : 6.50 in Height : 31.21 in	
Weight	~ 206 lb.	
Operating Temperature¹	Charging Temp: -5°C ~ 55°C ; Discharge Temp: -15°C ~ 55°C	
Storage Temperature²	-15 °C ~ 55 °C	
Working Humidity	<95% RH (Non-Condensing)	
Altitude³	≤2000 m	
Communication	CAN, RS485, Dry Contact, WiFi	WiFi Stick Option
Certificate	TUV, IEC 62619, IEC62040, IEC61000 UN38.3, UL	
Designed Cycle Life: (25°C±2°C)	> 8,000 Cycles	0.5C/80%DOD/80%SOH @ 1 cycle per day
Heating Power	Max. 230.4 W	
IP Rating	IP65	

INVERTER SPECIFICATIONS

Model	SE5KH-B-130-D2UL	SE6KH-B-130-D2UL	SE7K6H-B-180 T2UL	SE10KH-B-210-2UL	SE12KH-B-210-T2UL
Efficiency					
Max. Efficiency (PV to AC)				98.0%	
Max. Efficiency (BAT to AC)				94.5%	
Input (PV)					
Max. PV Configuration				200%	
Max. PV Input Power	7,500W	9,000W	12,000W	15,000W	15,000W
Max. PV Voltage				600V	
Start-up Voltage				90V	
MPPT Operating Voltage Range				70V-550V	
Max. Input Current per MPPT	30A/22A			30A/22A/22A	
Max. Short Current per MPPT	40A/30A			40A/30A/30A	
String per MPPT	4(2/2)			6(2/2/2)	
Nos. of MPPT	2			3	
Input/Output (BAT)					
Battery Type	Lithium-ion				
Nominal Battery Voltage	48V				
Battery Voltage Range	40V - 64V				
Max. Charge/Discharge Current	210A/130A	210A/130A	210A/180A	210A/210A	210A/210A
Max. Charge/Discharge Power	10,000W/5,000W	10,000W/6,000W	10,000W/8,000W	10,000W/10,000W	11,400W/12,000W
Output (Grid)					
Nominal AC Output Power	5,000W	6,000W	7,600W	10,000W	11,400W
Max. AC Output Apparent Power	5,500VA	6,600VA	7,600VA	11,000VA	11,400VA
Max. AC Output Power (PF=1)	5,500W	6,600W	7,600W	11,000W	11,400W
Nominal AC Output Current	20.9A/24.1A	25A/28.9A	31.7A/36.6A	41.7A/47.5A	47.5A/54.8A
Max. AC Output Current	26.5A	31.8A	36.6A	47.5A	54.8A
Nominal Grid Voltage	120V / 240 (Split phase) / 208V (2/3 phase)				
Nominal Grid Frequency	50Hz / 60Hz				
Grid Frequency Range	45Hz-55Hz / 55Hz-65Hz (Adjustable)				
Power Factor	> 0.99 @ rated power (Adjustable 0.8LD - 0.8LG)				
THDI	<3% (Rated Power)				
Output (Back up)					
Nominal Output Power	5,000W	6,000W	7,600W	10,000W	11,400W
Nominal Output Current	20.9A/24.1A	25A/28.9A	31.7A/36.6A	41.7A/47.5A	47.5A/54.8A
Peak Output Apparent Power (1s)	10,000VA	12,000VA	15,200VA	20,000VA	20,000VA
Nominal Output Voltage	120V / 240V (Split phase) / 208V (2/3 phase)				
Nominal Output Frequency	50Hz / 60Hz				
Transfer Time	<10ms				
THDV	<3% @100% R Load				
Protection					
Protection Category	Class I				
DC Switch	Yes				
Anti-islanding Protection	Yes				
AC Overcurrent Protection	Yes				
DC/AC Overvoltage Protection	DC Type II, AC Type III				
AC Short Circuit Protection	Yes				
DC Reverse Protection	Yes				
Surge Arrester	DC Type II, AC Type II				
Insulation Resistance Detection	Yes				
Leakage Current Protection	Yes				
AFCI	Yes				
RSD	Yes (AP systems, Sunspec)				
Generator	Yes				
General					
Max. Operation Altitude	2000m				
Ingress Protection Degree	IP65 / NEMA 3R				
Operating Temperature Range	-25°C - 60°C (>45°C derating)				
Relative Humidity	0-100%				
Cooling Method	Fan Cooling				
Mounting	Wall bracket				
Dimensions (W*H*D)	16.5 * 31.5 * 9.4 inches				
Weight	88lb				
PV Connection Way	Terminals				
HMI & COM					
Display	Bluetooth & APP + LED, LCD (optional)				
Communication Interface	RS485 / CAN (for BMS), DRM / RS485 (for meter), RS485, Optional: WIFI / LAN				
Certification					
Safety	UL 1741 / CSA C22.2 / UL 1699B				
Grid	UL 1741 SB, IEEE 1547: 2018, HECO SRD 2.0				
EMC	FCC Part 15 Class B				
Warranty	10 Years				

*CONTACT
INFORMATION*

Tel or Text: 707.889.3396

Email: info@ess-llc.com

Website: ess-llc.com

161 FORT EVANS ROAD
SUITE 250
LEESBURG, VA 20176

1225 PONCE DE LEON AVENUE
PH # 1028
SAN JUAN, PUERTO RICO 00907