

# POWERLINK ENERGY



SOLAR ELECTRIC GENERATOR



DESIGNED, ENGINEERED  
ASSEMBLED IN THE USA

AN  
ENERGY  
STORAGE  
SYSTEMS  
LLC  
COMPANY

RAPID DEPLOYABLE SOLAR POWER SOLUTIONS  
... ANYTIME ... ANYWHERE



MODULAR • SCALABLE • MOBILE • ECO FRIENDLY  
NOISELESS • ODORLESS • FUEL-LESS • RUGGED

PRIMARY, BACKUP  
OR EMERGENCY!

GRID/OFF-GRID  
& PORTABLE!

## INTRODUCING THE FUTURE OF SOLAR POWER SOLUTIONS RAPID DEPLOYABLE, PLUG-N-PLAY POWER

- THE NEXT GENERATION SWISS ARMY KNIFE OF PROFESSIONAL GRADE AC/DC POWER
- SMART, SOLAR/BATTERY POWERED, MULTI-VOLTAGE, MULTI-APPLICATION SOLUTIONS
  - ALL-IN-ONE SYSTEM --- WITH MPPT CHARGE CONTROLLER, PURE SINE INVERTER / CHARGER
    - SOLAR --- FLEXIBLE ROLLABLE - FOLDING - OR RIGID GLASS PANELS
    - BATTERY --- 24V/48V ~ 7.5/12/15KWH FR SERIES - INTELLIGENT, LONG LIFE LITHIUM BATTERIES
      - VERSATILE--- PORTABLE OR FIXED --- GRID-CONNECT, OFF-GRID OR BOTH
- MODULAR --- “LEGO BLOCK” SYSTEM --- MIX OR MATCH --- GRID CONNECT/OFF-GRID, SOLAR/BATTERY
  - SCALABLE --- UP TO MWH SYSTEMS
- PLUG-N-PLAY --- “DIY READY” --- EASY TO INSTALL / OPERATE --- READY TO USE OUT OF THE BOX
  - INSTANT POWER --- DEPLOY AND ENJOY
  - ENVIRONMENTAL --- SAFE, RUGGED --- INDOOR / OUTDOOR USE
  - PROUDLY DESIGNED, ENGINEERED & ASSEMBLED IN THE USA

## eGEN - SOLAR ELECTRIC GENERATOR

Designed for primary or emergency AC or DC power, the Powerlink eGEN is a Rapid Deployment Solar Electric Generator, powered by single or dual FR Series, intelligent, long-life, 24V or 48V lithium batteries, with module capacities ranging from 7.5kWh to 150kWh. The system includes 3/5/8/or 12kW Hybrid Inverters [dual MPPT solar charge controllers and Inverters, as well as a grid charger] ... with a maximum continuous input/output of up to 100A per module, at their respective voltages. State-of-Charge [SoC] can also be accessed via an available Android or PC app. The plug-n-play eGEN system is available in stationary, mobile cabinet or transportable, trailer-based systems.

- **FIRE RESISTANT LFP BATTERY**

- Single or Dual 24V or 48V --- 7.5kWh ~ 15kWh FR Series --- Intelligent Lithium Batteries
- Life Cycle @ 80% DoD --- >7000 cycles for eGEN --- 350± Cycles for typical AGM SLA Batteries

- **BATTERY MANAGEMENT SYSTEM – Safety/Fuel Gauge/Connectivity/Communications**

- **POWER MANAGEMENT SYSTEM – All-in-One System Electronics**

- Dual MPPT Charge Controllers
- AC Charger
- Pure Sine Inverters
- AC & DC Breakers
- Automatic Transfer Switches
- Automatic Disconnect
- Auto Gen Start
- Cabinet

- **ROLLING ENCLOSURE**

- I/O Panel --- AC/Solar Receptacles, Battery Disconnect Switches
- Vent Kit --- Intake Vent with Removable Filter --- Exhaust Vent with Fan --- Thermostat

- **SOLAR PANELS [Optional]**

- Semi-Flexible --- Portable/Fixed [Peel & Stick] --- Mono-Crystalline --- 340W Panel
- Rigid Panels --- Rack Mounted System --- Mono-Crystalline –Panels

- **BATTERY BACKUP GENERATOR [Optional]**

- 12kW Peak, Dual-Fuel Generator to charge batteries in an emergency

- **SMART DESIGN – MODULAR --- SCALABLE**
  - *State-of-the-Art, Programmable, Plug-n-Play System --- Easy to Install/Operate*
  - *Small Form Factor --- Rugged Design --- Compact, Lighter than SLA Batteries*
  - *Separate Battery Compartment --- Isolating cells from rest of the components*
  
- **ADVANCED PRISMATIC LITHIUM CELL TECHNOLOGY --- LONG LIFE BATTERY**
  - *Life Cycle @ 80% DoD --- >7000 cycles for MOAB Lithium*
  - *Reduces Replacement, Labor and Logistical Costs associated with batteries*
  - *Field Replaceable Components*
  
- **PROTECTION – FIRE SAFETY, RELIABILITY & ENVIRONMENTAL**
  - *Specially formulated Internal insulation, to provide exceptional fire protection*
  - *Fire Resistant Encapsulation of Cells, Modules and Pack up to 1200 °F*
  - *Internal Safety Protection --- Built-in Safety Shutoffs at Cell & BMS Level*
  - *BMS + PDU PCBs --- Cell Protection Technology --- Robust --- No moving parts*
  - *Additional Protection ---against Dirt, Dust, Moisture, Shock and Vibration*
  - *High strength, fire resistant aluminum enclosure with 2-stage automotive venting*
  
- **COMMUNICATIONS**
  - *Fully Programmable Software --- for Field Programming & Diagnostics*
  - *Wireless Bluetooth --- for Programming Functions & Systems Information via Mobile App*
  - *Wired CAN bus -- for Programming Functions & Systems Information*
  - *Optional Remote Monitoring & Communications via Internal/External Plug-In Modules*
    - *Wi-Fi, GSM & Lo-Ra Mesh Network*
  
- **WARRANTY**
  - *10 Years Limited to defects in material or workmanship*

## APPLICATIONS

- PRIMARY GRID INTERACTIVE [MAIN LOAD]
- SECONDARY GRID INTERACTIVE [BACK-UP POWER FOR CRITICAL LOAD]
- OFF-GRID PRIMARY POWER [LIGHTS, FANS, TV, PC, PHONES, SMALL APPLIANCES, REFRIGERATORS]
- OFF-GRID DEDICATED POWER [POOL HEATERS, SPAS, HOT WATER HEATERS, SOLAR PUMPS, ETC.]
- AUXILIARY POWER [RV, BOATS, TRAILERS\*, TRANSPORT/FOOD/CATERING TRUCKS, ETC.]
- PORTABLE POWER [LIGHTING, SMALL POWER TOOLS, BATTERY CHARGERS, COOLERS, ETC.]

## MARKET [PORTABLE/FIXED]

- OUTDOOR -- TRADE SHOWS, OUTDOOR EVENTS, FLEA/FARMERS' MARKETS, ETC.
- RECREATION -- CAMPING, HUNTING, FISHING, BEACHES, BASE CAMPS
- CONTRACTORS -- ELECTRICAL, HVAC, CARPENTRY, ETC.
- TRANSPORT -- TRUCK, RV, MARINE
- PRIMARY/BACKUP -- RESIDENTIAL, COMMERCIAL, BANKS, GAS STATIONS, STORES, PREPPERS, GROWERS
- RURAL--- SCHOOLS, CHURCHES, CLINICS, STORES, ETC.
- EMERGENCY -- GOV'Ts: FEMA, ETC. ---- NGOs: RED CROSS, ETC. --- CHARITIES: RELIEF
- MILITARY -- SOLDIER POWER, BASE CAMPS, FIELD HOSPITALS, ETC.

**eGEN 30 PACKAGE**

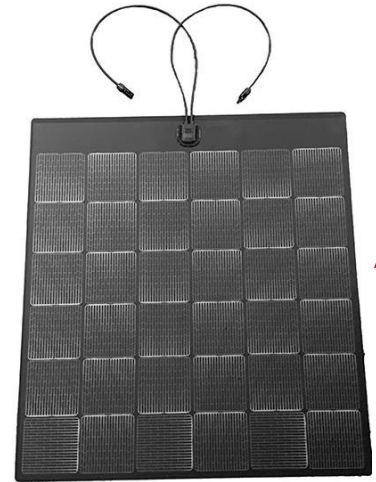
**FR SERIES LITHIUM BATTERY**



**INVERTER/CHARGER**



**ROLLING  
ALUMINUM  
ENCLOSURE**

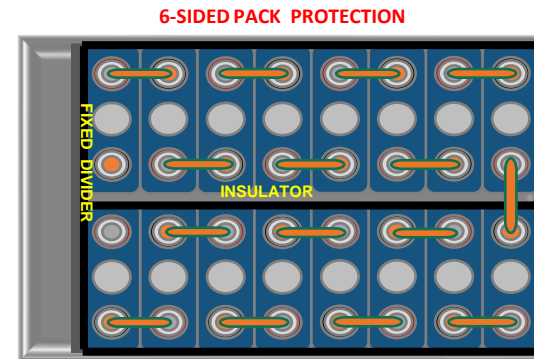
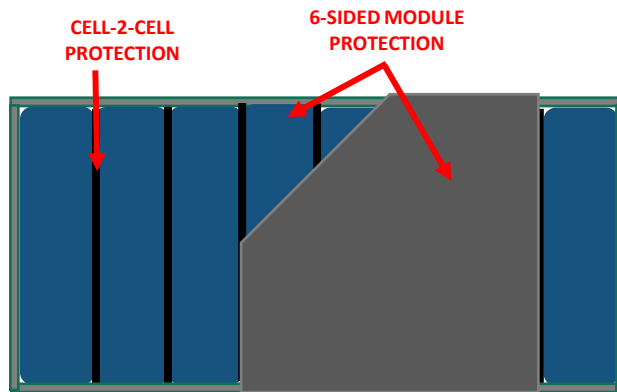


**FLEXIBLE GLASS-LESS SOLAR**

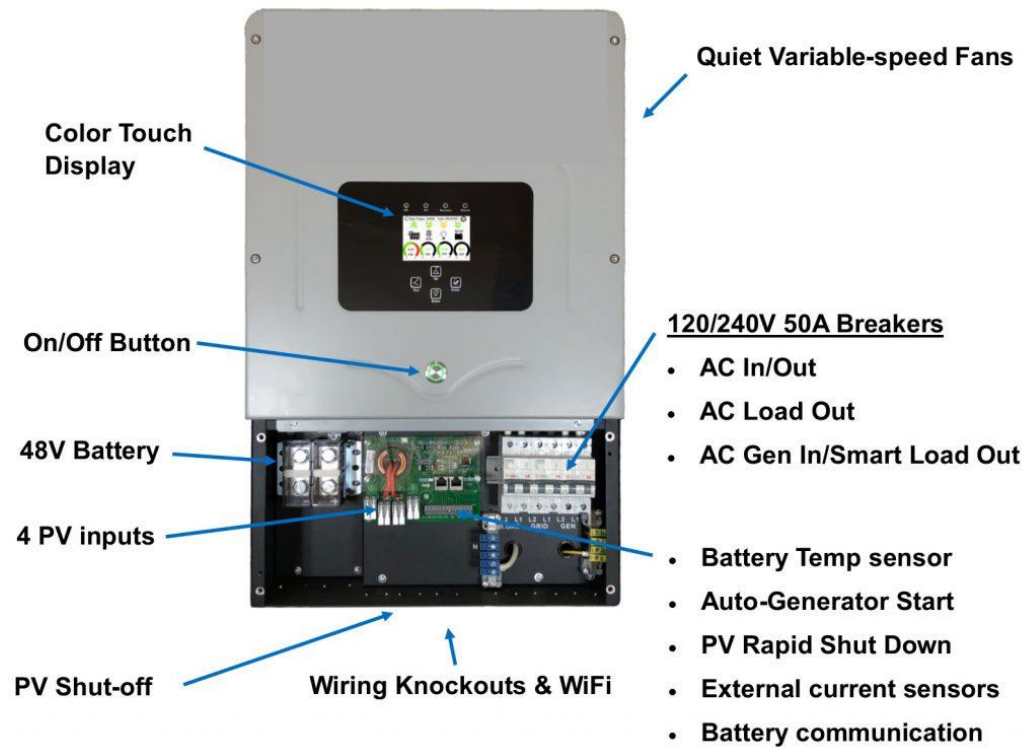


**GENERATOR  
[OPTIONAL]**

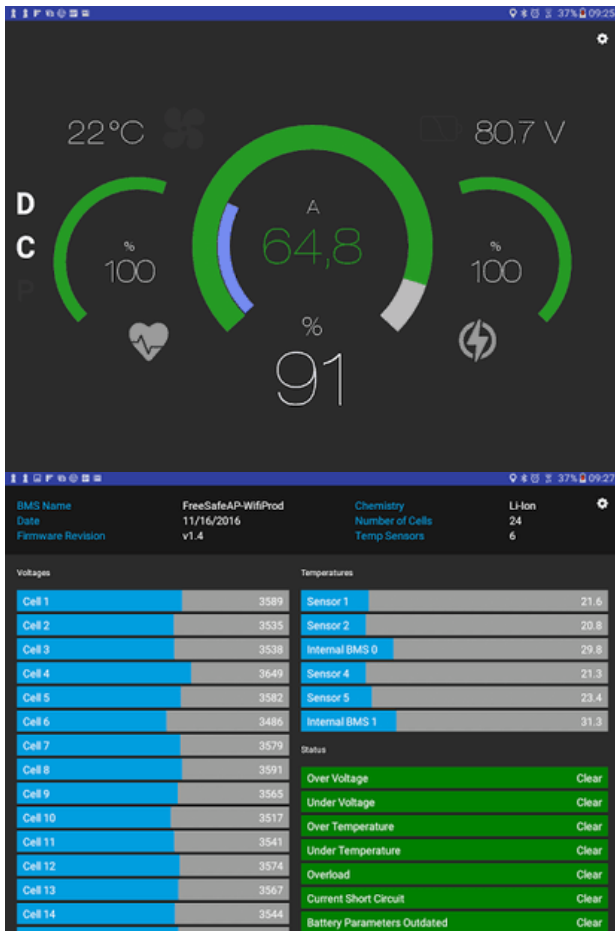
# FIRE-RESISTANT SERIES LITHIUM BATTERY



## ALL-IN-ONE SOLAR/GRID/GENERATOR CHARGER & INVERTER SYSTEM



## ALL-IN-ONE SOLAR/GRID/GENERATOR CHARGER & INVERTER SYSTEM



### All-in-One Solar Generator

MPPT Charge Controller, Grid Charger, Inverter

### Next Generation Efficiency

3X Better! Only 3.5% losses vs. 14% in today's battery-based systems

### Split Phase & Three Phase

Pumps out power just like the grid, allowing you to power 120V/240V/208V appliances

### Grid-Tied, Hybrid, Off-Grid

Manages power from Solar, Battery, Grid, Load, and Generator simultaneously

### Flexible

Expandable from 5 to 52 (16.5 kW) solar panels and 0-32 batteries

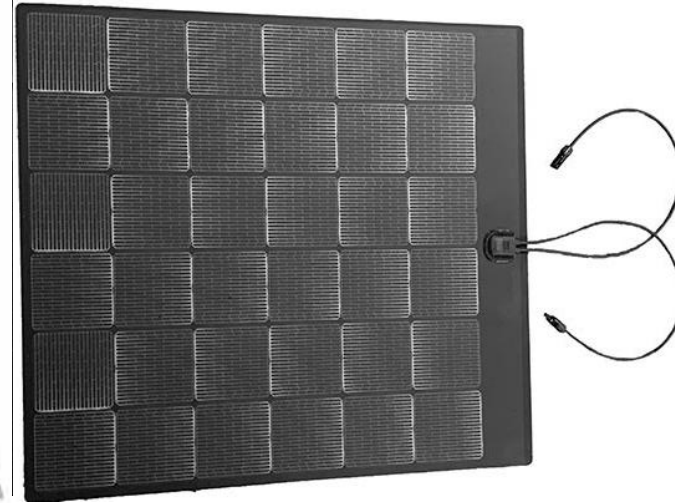
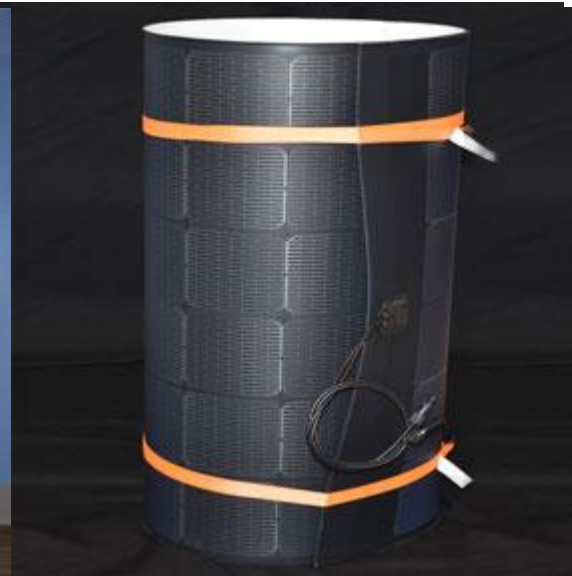
### DC Transformer-less

Boosts PV energy 10-20% without increasing PV array size

### U.P.S

Acts as a massive UPS with a lightning fast 4ms transfer time

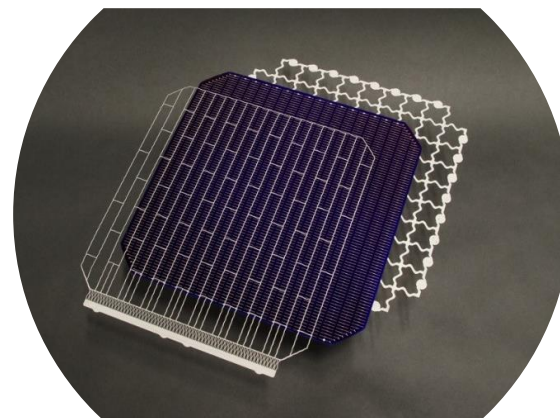
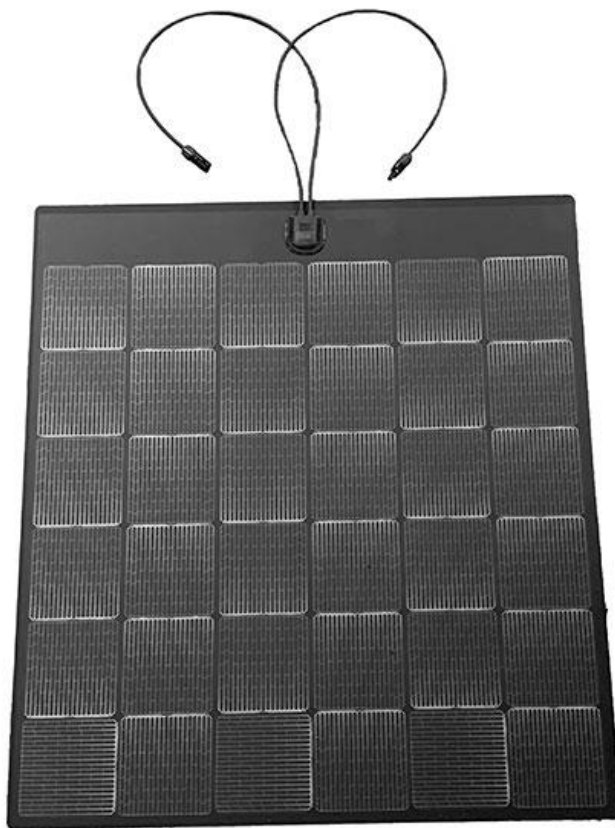
RUGGED - LIGHTWEIGHT MONO-CSI SOLAR  
FLEXIBLE - GLASSLESS --- "PEEL & STICK"



OPTIONAL

RUGGED - LIGHTWEIGHT MONO-C-SI SOLAR  
FLEXIBLE - GLASSLESS --- "PEEL & STICK"

**Grid Patented Technology Solar Panel**  
Flexible – Rugged – Lightweight - cSi Technology



- Frameless/Glassless Mono cSi
- Fast and easy peel-and-stick application
- Penetration-free design
- Flexible sheets can adapt to any shape
- Enhanced energy output in low and diffused light
- Superior aesthetics
- Lightweight, durable, and reliable
  - 80% Lighter
  - 20% More energy
  - 50% More durable vs. Bus Bar technology
  - 2.5X Power Density vs Thin-Film Technology

**OPTIONAL**

DUAL-FUEL BACKUP GENERATOR [OPTIONAL]



GASOLINE	PROPANE
<b>12000</b> PEAK WATTS	<b>11400</b> PEAK WATTS
<b>9500</b> RUNNING WATTS	<b>9025</b> RUNNING WATTS
<b>RUNS ON GASOLINE OR PROPANE</b>	



**RUNS ON GAS OR PROPANE**

Runs on gasoline or liquid propane, offering the freedom and flexibility of fuel choice.



**EQUIPPED WITH CO ALERT**

An advanced technology to keep your family safe and sound from harmful engine fumes.



**DIGITAL COMMAND CENTER**

Track voltage output, operating frequency, and maintenance hours.



**PUSH BUTTON START**

With Push Button Start, starting your generator is as easy as starting your car.

**OPTIONAL**

## DUAL-FUEL BACKUP GENERATOR [OPTIONAL]

### PRODUCT SPECIFICATIONS

<b>AMPERAGE</b>	39.6A/79.2A	<b>RUNTIME (GASOLINE) AT 1/2 LOAD</b>	8.83 HOURS
<b>VOLTAGE</b>	120V / 240VAC	<b>RUNTIME (PROPANE) AT 1/2 LOAD</b>	7.2 HOURS
<b>FREQUENCY</b>	60Hz	<b>START TYPE</b>	ELECTRIC / RECOIL
<b>HORSEPOWER</b>	18HP	<b>VOLUME LEVEL</b>	74 Db
<b>ENGINE SIZE</b>	457cc	<b>EPA CERTIFIED</b>	YES
<b>ENGINE TYPE</b>	4-CYCLE/SPARK-IGNITION	<b>CARB CERTIFIED</b>	YES
<b>ENGINE COOLING</b>	AIR-COOLED	<b>CSA CERTIFIED</b>	NO
<b>ENGINE SPEED</b>	3600RPM	<b>PRODUCT DIMENSIONS</b>	30" L x 29" W x 26" H
<b>FUEL TYPE</b>	GASOLINE / PROPANE	<b>PRODUCT WEIGHT</b>	230 LBS
<b>FUEL TANK CAPACITY (GASOLINE)</b>	8.3 GALLONS		
<b>SUGGESTED TANK SIZE (PROPANE)</b>	40 LBS		

### POWER SPECIFICATIONS

	GASOLINE		PROPANE
<b>PEAK WATTS</b>	12,000	<b>PEAK WATTS</b>	11,400
<b>RUNNING WATTS</b>	9,500	<b>RUNNING WATTS</b>	9,025
<b>PEAK AMPS @ 120V</b>	100	<b>PEAK AMPS @ 120V</b>	95.00
<b>RUNNING AMPS @120V</b>	79.17	<b>RUNNING AMPS @ 120V</b>	75.21
<b>PEAK AMPS @ 240V</b>	50	<b>PEAK AMPS @ 240V</b>	47.50
<b>RUNNING AMPS @ 240V</b>	39.58	<b>RUNNING AMPS @ 240V</b>	37.60

*CONTACT  
INFORMATION*

NICK PATEL

707.889.3396

NICK@ESS-LLC.COM